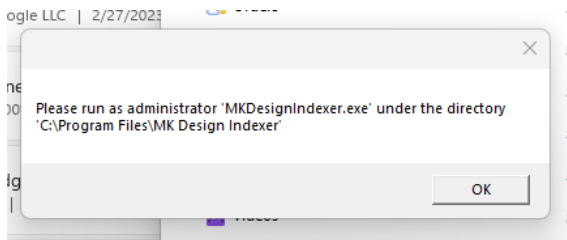


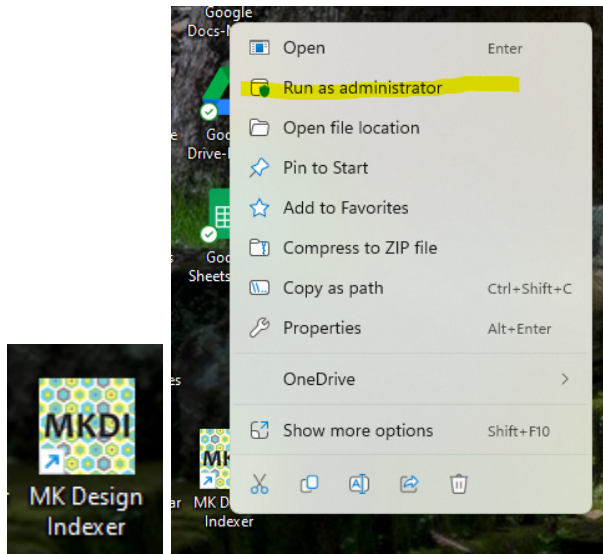
Updating QPI to MKDI

Due to the renaming of the application, we need to work around the Windows security requirements that prevent one program from modifying another program's files. Therefore this will require several steps.

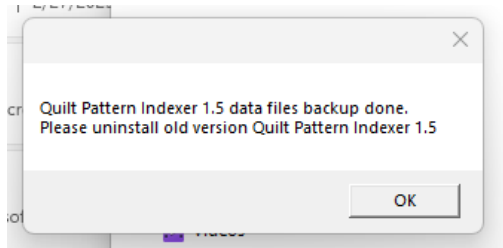
1. Download the MKDesignIndexerSetup2.#.zip file from the MKDesignIndexer.com website.
2. Uncompress and run the MKDesignIndexerSetup2.#.exe file.
3. Proceed through the normal installation dialog boxes - select 'Create Desktop Icon' for ease of use.
4. When you run the program for the first time, it will ask you to run the program as administrator...



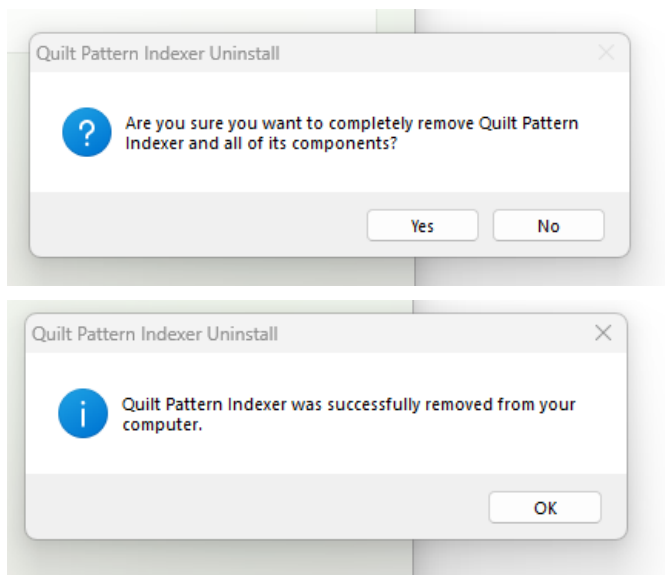
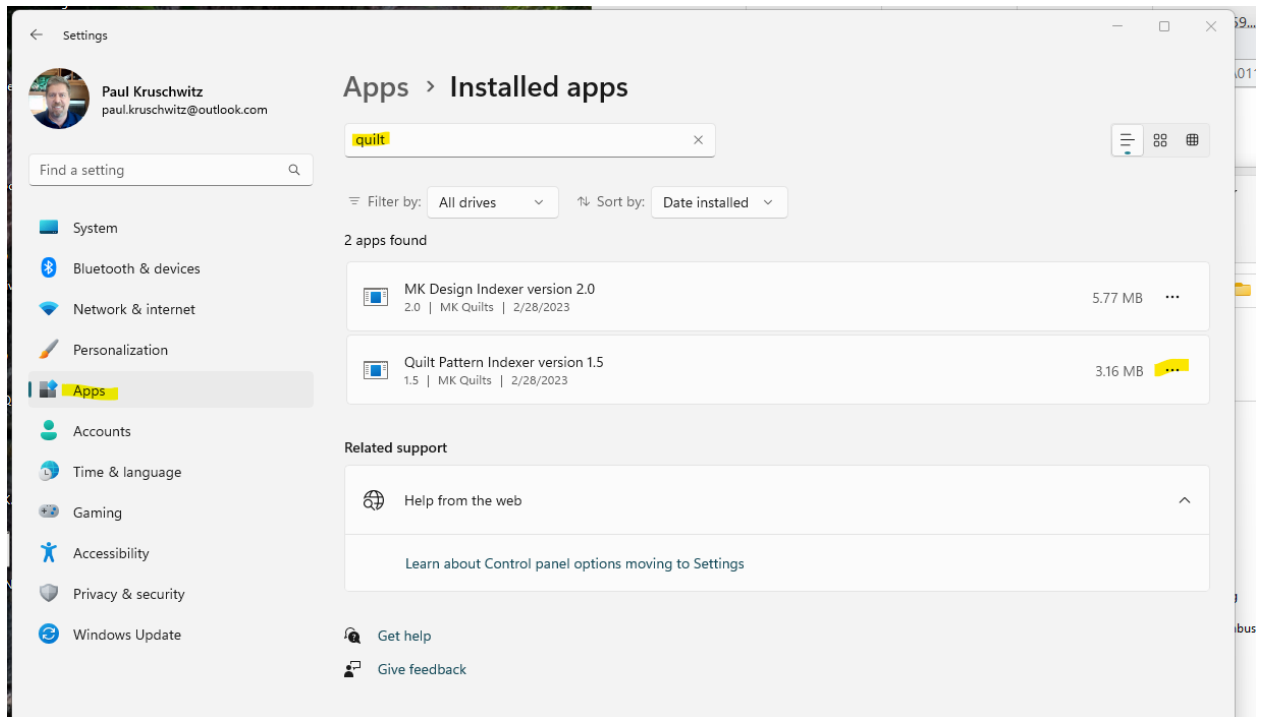
You may right click on the icon or the program file in file manager and select 'Run as Administrator'.



The following dialog will display. Select OK.



5. After installing and running MKDI for the first time, UNINSTALL QPI by going to Settings->Apps>Installed apps. (This will vary in appearance on different versions of Windows. MKDI will not run until QPI is uninstalled.



Click on the bullet menu to uninstall (on Windows 11). Your keywords are already backed up to the MKDI environment.

- If you need assistance, please schedule a remote PC support session through this link: <https://www.mkquilts.com/support.html#livesupport>

6. Now when you run MKDI by clicking on the icon, it will start normally. You do not need to run it as administrator. You will automatically be licensed for quilting patterns. A license file for Embroidery Designs can be purchased separately at [MKQuilts.com/shop](https://www.mkquilts.com/shop).