



# MK DESIGN INDEXER

## User Manual

MKDI Version 2.09

Brought to you by





## Revision History

| <b>Version</b> | <b>Date</b> | <b>Description of Changes</b>                  |
|----------------|-------------|--|
| -              | 9/24/2023   | Initial document release for MKDI version 2.09 |
|                |             |  |



# Table of Contents

- 1 Introduction ..... 1
- 2 Installation..... 1
  - 2.1 Installation and Running for the First Time ..... 1
  - 2.2 Finding the patterns..... 2
  - 2.3 Upgrading from a Previous Version..... 2
  - 2.4 License Activation and Free Trial Period ..... 2
- 3 The MKDI program window ..... 2
- 4 Basic Controls ..... 3
  - 4.1 Selection and Search Tips ..... 3
  - 4.2 Navigation..... 4
    - 4.2.1 Single click/tap ..... 4
    - 4.2.2 Context Dependent Menus ..... 4
      - 4.2.2.1 The Tree Menu ..... 4
      - 4.2.2.2 The Thumbnail Menu..... 5
      - 4.2.2.3 The Preview Menu..... 5
      - 4.2.2.4 Tool Tips..... 6
      - 4.2.2.5 Preview Windows..... 6
- 5 The Importance of a File Management Plan..... 7
- 6 Keywords..... 8
  - 6.1 General Information..... 8
  - 6.2 Managing Keywords..... 8
  - 6.3 Understanding a Hash Value Versus a File Name ..... 9
- 7 Printing ..... 9
- 8 The Menus..... 11
  - 8.1 File Menu..... 11
    - 8.1.1 Create Purchased Folder ..... 11
    - 8.1.2 Open Pattern Zip.. ..... 12
    - 8.1.3 Search for Notes..... 13
    - 8.1.4 Find Duplicate Files ..... 14
    - 8.1.5 Backup Patterns..... 15
    - 8.1.6 Reset Designs Folder ..... 16
    - 8.1.7 Settings ..... 17
      - 8.1.7.1 Indexed Folders ..... 17
      - 8.1.7.2 Openable Formats..... 17
      - 8.1.7.3 Expand folder on selection ..... 18
      - 8.1.7.4 Delete trash Files (.\*). ..... 18
      - 8.1.7.5 Show format overlays ..... 18
      - 8.1.7.6 Keyword By Name ..... 18
    - 8.1.8 Refresh Tree ..... 18



|         |  |    |
|---------|--|----|
| 8.1.9   | Exit.....  | 19 |
| 8.2     | Keywords Menu .....                                  | 19 |
| 8.2.1   | Import.. .....                                       | 19 |
| 8.2.2   | Export.....  | 19 |
| 8.2.3   | Sync.....  | 20 |
| 8.2.3.1 | Create Backup.....                                   | 20 |
| 8.2.3.2 | Sync To .....  | 20 |
| 8.2.3.3 | Sync From.....                                       | 21 |
| 8.2.4   | Reset.....   | 21 |
| 8.2.5   | Restore Defaults.....                                | 21 |
| 8.3     | Help Menu.....                                       | 21 |
| 8.3.1   | MKDI Facebook Group.....                             | 21 |
| 8.3.2   | Support Website.....                                 | 21 |
| 8.3.3   | MK Quilts University.....                            | 21 |
| 8.3.4   | What's new.....                                      | 21 |
| 8.3.5   | About.....   | 21 |
| 9       | FAQ - Frequently Asked Questions.....                | 21 |
| 9.1     | Synonyms.....  | 21 |
| 9.2     | I can't see any designs in the QPI window.....       | 21 |
| 9.3     | What is the best place to save my patterns? .....    | 22 |
| 9.4     | My C:\Designs folder is a mess! What can I do? ..... | 22 |
| 9.5     | Can I install MKDI on multiple computers? .....      | 22 |
| 9.6     | Some of my designs are not showing up .....          | 22 |
| 9.7     | How do I update to the latest version?.....          | 22 |
| 9.8     | What is a "dot release"? .....                       | 23 |
| 10      | Troubleshooting Steps .....                          | 23 |
| 11      | Release Notes.....                                   | 23 |
| 11.1    | MKDI Version 2.09 .....                              | 23 |
| 11.2    | MKDI Version 2.05 .....                              | 24 |
| 11.3    | MKDI Version 2.04 .....                              | 24 |
| 11.4    | QPI Version 1.5 (August 2020) .....                  | 24 |



## List of Figures

|   |    |
|---|----|
| Figure 1: The MKDI Program Window.....                | 3  |
| Figure 2: Tree Menu.....                              | 5  |
| Figure 3: Thumbnail Menu .....                        | 5  |
| Figure 4: Preview Menu (from embroidery file).....    | 6  |
| Figure 5: Example of Multiple Preview Windows .....   | 7  |
| Figure 6: Keyword Management Example.....             | 9  |
| Figure 7: Print Dialog Box .....                      | 10 |
| Figure 8: Print Preview Window .....                  | 10 |
| Figure 9: File Menu .....                             | 11 |
| Figure 10: Purchased Patterns Folder Example .....    | 11 |
| Figure 11: Open Pattern Zip Example .....             | 12 |
| Figure 12: Search for Notes Example .....             | 13 |
| Figure 13: Contextual Menu to get to Edit Notes ..... | 14 |
| Figure 14: Edit Notes Example .....                   | 14 |
| Figure 15: Duplicate Files Example.....               | 15 |
| Figure 16: Backup Patterns Window Example .....       | 16 |
| Figure 17: Settings Window .....                      | 17 |
| Figure 18: Format Overlays .....                      | 18 |
| Figure 19: Keywords Menu.....                         | 19 |
| Figure 20: Synchronize Keywords Window.....           | 20 |



# 1 Introduction

MK Design Indexer 2.0 is the upgrade from QPI 1.5. Quilt Pattern Indexer is now MK Design Indexer. We have added embroidery support and general bug fixes. General functionality has not changed.

MKDI is a powerful tool. It has been kept as simple to use as possible, but there are now advanced features that may take a little time to learn. Many features in the program have a new HELP button that will bring you to this manual.

The terms "patterns" and "designs" are used interchangeably in this document.

**No patterns are included in the program.** MKDI simply reads the pattern files that exist in designated folders. The program will help you set up which folders are scanned and indexed.

**Please review this manual before contacting support.**

***Note:** If this document is being used electronically, all cross-references and section references are hyperlinks. Just point your cursor at the reference. The cursor should turn into a finger pointer. A click will take you to the referenced location in the document.*

If you use Facebook, join the MKDI Community public group and use the search feature prior to posting your questions there. It is likely that someone has asked the question before.

If you do not use Facebook or cannot find the answer there, use this website to schedule a live support call: <https://www.mkquilts.com/support.html>

Click [here](#) to be taken to the MKDI Facebook group.

## 2 Installation

### 2.1 Installation and Running for the First Time

Download the program. Go to [mkdesignindexer.com](http://mkdesignindexer.com), select Download, then follow the link to download the program.

After running the .exe file that was downloaded, you should end up with a MKDI icon on your desktop. As with any other program, simply double-click/double-tap the icon to run the program. If you are not currently licensed to use the program, the "About" window will display. There is a 14 day trial period from when you first install MKDI.

MKDI can also run on the Pro-Stitcher tablet. Just use a USB memory stick to take both the program and activation key to the device. The **Keyword - Sync...** feature can be used to quickly keep a laptop and the Pro-Stitcher tablet synchronized. (See section 8.2.3 for more information.)



## 2.2 Finding the patterns

**No patterns are included in the MKDI program.** MKDI simply reads the pattern files that exist in designated folders. By default, the program will scan and index pattern files found in C:\Designs on the local hard drive. This is the default storage location for the free Handi Quilter patterns.

It will also look for a "Designs" folder in your "Documents" folder (C:\users\\Documents\Designs). This location was proposed in previous versions as a place to store purchased patterns, however the new "Purchased Folder" feature and related ZIP extraction feature make this obsolete. (See sections 8.1.1 and 8.1.2 for more information.)

You may add and delete folders to be searched by the MKDI program by selecting **File - Settings** through the main menu. (See section 8.1.7.1 for more information.)

**Encrypted patterns cannot be managed by MKDI.** Encrypted patterns normally have a file extension ending with the letter "x". When buying patterns, all patterns should be uncompressed (unzipped) as directed by the designer. Unsupported file extensions will simply be ignored by MKDI. Ask the designer to contact MK Quilts about future support of their encrypted patterns.

## 2.3 Upgrading from a Previous Version

Follow the same steps described in section 2.1. MKDI should use all of your previous settings, including your license. If MKDI does not recognize your license, select "Activate Now" and choose your license file.

## 2.4 License Activation and Free Trial Period

The program will run for 14 days from the initial installation without purchasing a license. If updating from QPI 1.5, you will be able to use the Embroidery features for 14 days. Purchasing the MKDI program or license can be done at [shop.mkquilts.com](http://shop.mkquilts.com). We sell versions of MKDI pre-licensed as well as the individual quilting or embroidery license key. If you upgraded QPI to MKDI, you already have the quilting license. You may buy the embroidery license only and add it to your existing program.

The "Activator" licensing program used with QPI 1.5 is no longer used. If you have issues, email [mkdi-support@mkquilts.com](mailto:mkdi-support@mkquilts.com).

## 3 The MKDI program window

The MKDI window has a standard two pane layout common to many programs. The left side has a familiar folder tree layout with top level folders for these major categories:

- Favorites
- Pattern Folders
- Keywords
- Recent Searches

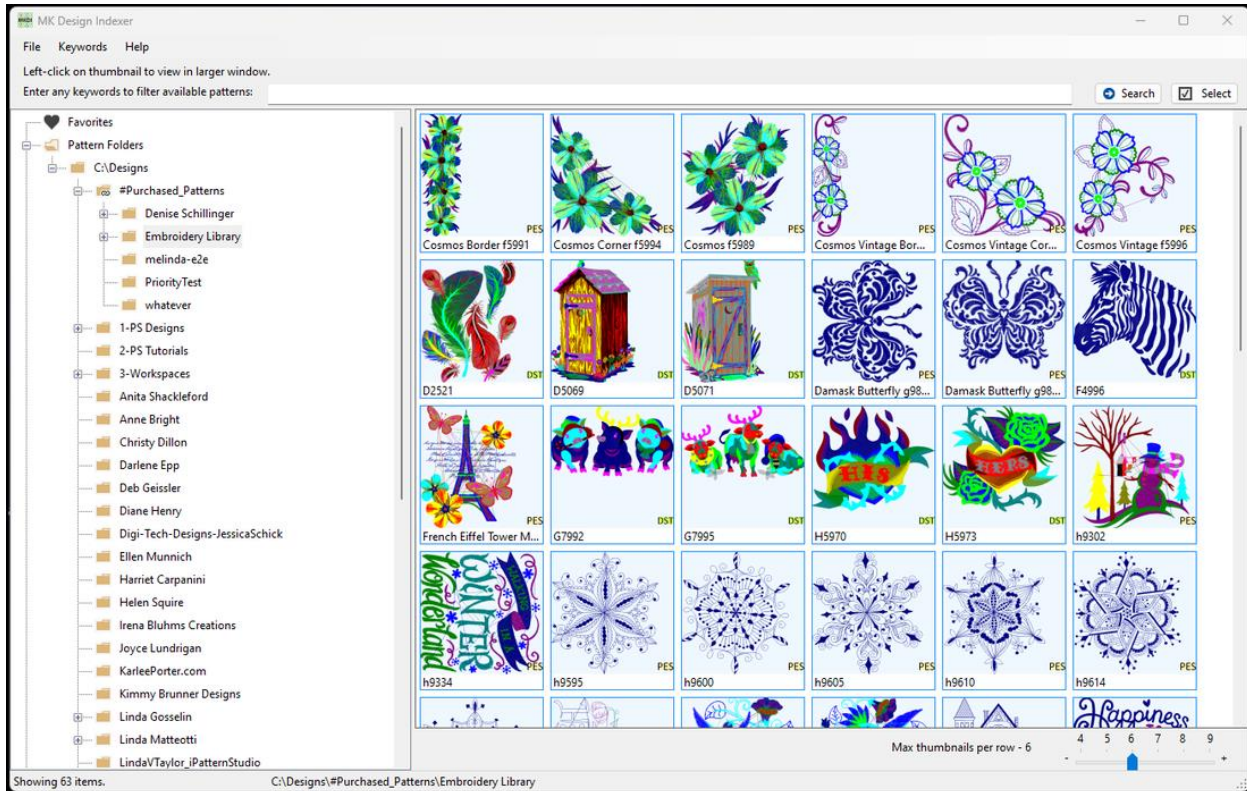


Figure 1: The MKDI Program Window

The right side will contain thumbnails of patterns. This may be filtered by the selection in the left pane or a keyword search parameter entered at the top of the window.

MKDI implements advanced pattern management features. You can find and delete duplicate patterns from **File - Find Duplicate Files** (see section 8.1.4) and move patterns and folders within the managed folders (see section 4.2.2). Also, the "Open in Explorer" feature has been added to most context menus in case you need to do something restricted in MKDI. MKDI still attempts to protect the novice user from making mistakes, so use these features with caution.

## 4 Basic Controls

### 4.1 Selection and Search Tips

There are two main sections of the MKDI main program window, the left pane and the right pane. The left pane has a pseudo tree layout while the right pane will have a grid of thumbnail images. What you have selected on the left will not only affect what is displayed on the right, but it will also determine the starting point of the search that is performed from the top search input line.

Without a search, the right pane will display only patterns in that folder, but not the sub-folders. Therefore, selecting a folder that does not have any designs in it will display nothing except a statement that no patterns are found in the folder.





A search will look through the folder selected in the left tree pane, including all the sub-folders. It also now lists the search in the left pane "Recent Searches" tree listing (at the bottom of the window), showing the search criteria, including the starting folder of the search. You may re-select any previous search results, however MKDI does not actually re-run the search unless you right-click (or touch-and-hold on touch screens) on the search and select "Repeat Search".

**Hint:** *To find patterns that have no keywords assigned to them, put two double quotes ("") in the search field.*

Max thumbnails per row can be selected with the slider in the lower right corner of the main window. This will allow you to scale the thumbnails to your personal preference, given your screen size and resolution.

## 4.2 Navigation

### 4.2.1 Single click/tap

In the left tree pane, a single click or finger tap will select a folder item.

In the right pane, in order to avoid the issues people can have with double clicking/tapping, we have made the single tap open the preview window instead of selecting the file.

Multiple preview windows can be opened at the same time. We also implemented a "Select" button at the top right that will toggle the single click/tap mode between "Open" and "Multi-select". If you select multiple items, right-click (or touch-and-hold on touch screens) to bring up the thumbnail menu (see section 4.2.2.2).

### 4.2.2 Context Dependent Menus

Clicking the right mouse button (or touch-and-hold on touch screens) will bring up a context-dependent menu. This means the menu that is brought up will depend on what is under the cursor when you click on it.

There are three specific context dependent menus: the tree menu, the thumbnail menu, and the preview menu.

#### 4.2.2.1 The Tree Menu

When you right-click (or touch-and-hold) on a folder in the left pane, you will get the tree menu (see Figure 2). Any selection you make from this menu will affect the folder and all of its contents.

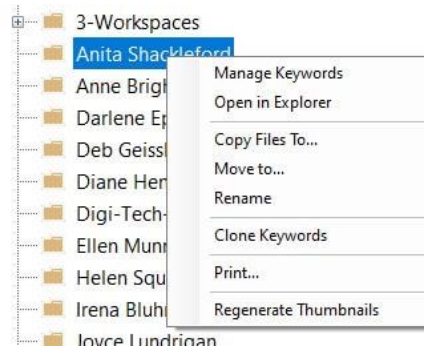


Figure 2: Tree Menu

#### 4.2.2.2 The Thumbnail Menu

When you right-click (or touch-and-hold) on a thumbnail image or selected group of images in the right pane, you will get the thumbnail menu (see Figure 3). Most of the selections from this menu will affect all files selected, but some (such as "File Information" and "Rename...") only affect the file whose image is under your pointer when you bring up the menu.

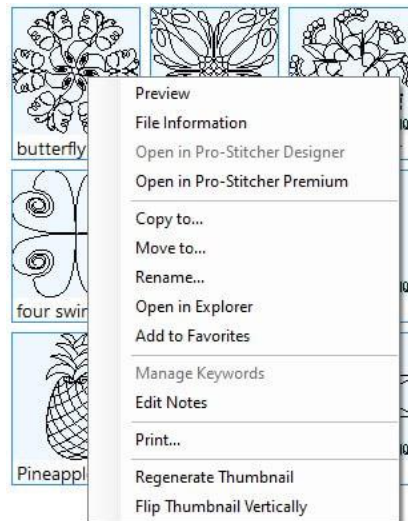


Figure 3: Thumbnail Menu

If you bring up preview windows of multiple files, but you don't see them all, try moving the preview window you see to another location on the screen. MKDI usually puts the windows on top of each other.

If thumbnails have poor quality, try the "Regenerate Thumbnail" option, which can be done at both the file and folder level.

#### 4.2.2.3 The Preview Menu

When you right-click (or touch-and-hold) in a preview window, you will get the preview menu (see Figure 4). The selections from this menu will affect only the file currently shown in the preview window.

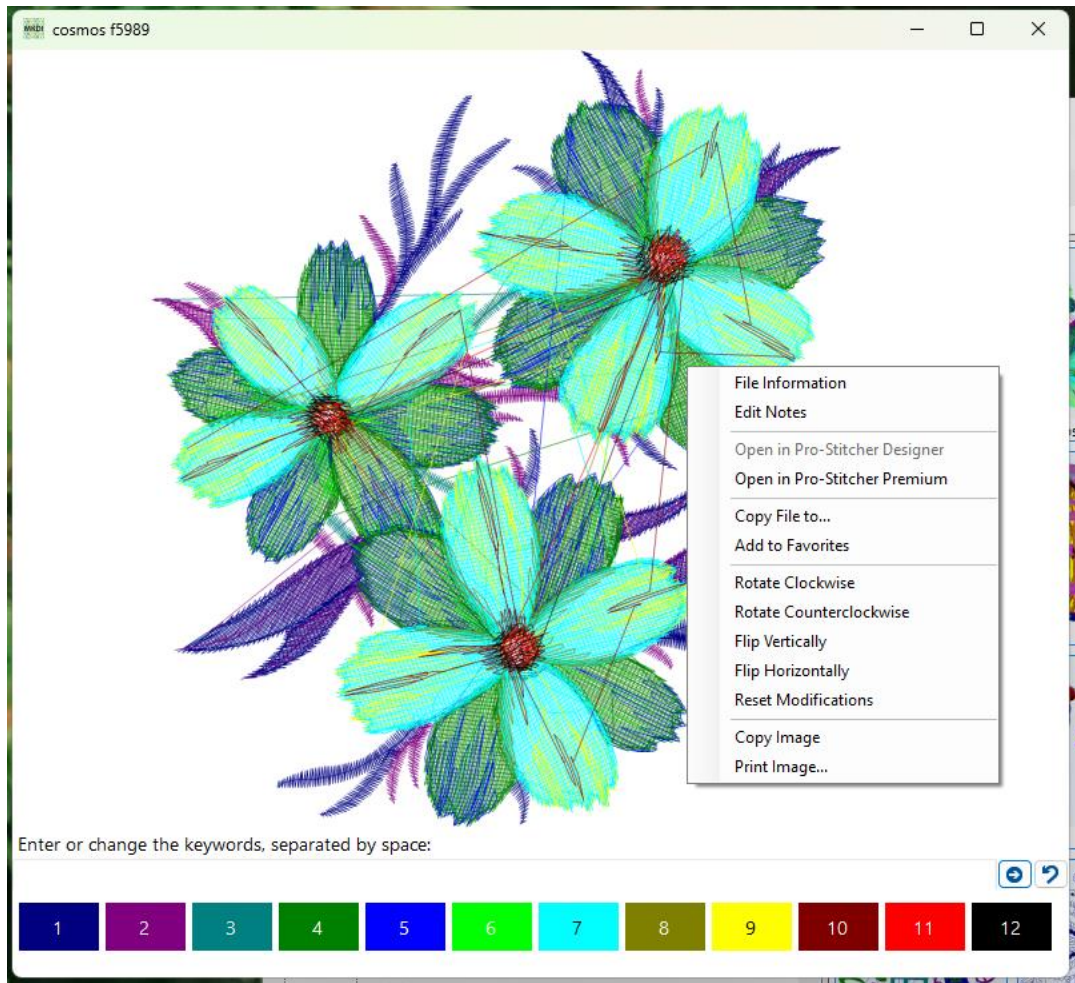


Figure 4: Preview Menu (from embroidery file)

#### 4.2.2.4 Tool Tips

Tool Tips are the box of information that appears when hovering the cursor (not clicking) over many objects throughout the program. In most cases, the tool tips provide information such as file name, file or folder location, and keywords.

#### 4.2.2.5 Preview Windows

You may open one or more preview windows from various folders. The context sensitive right-click (or touch-and-hold) menu described above provides additional features.

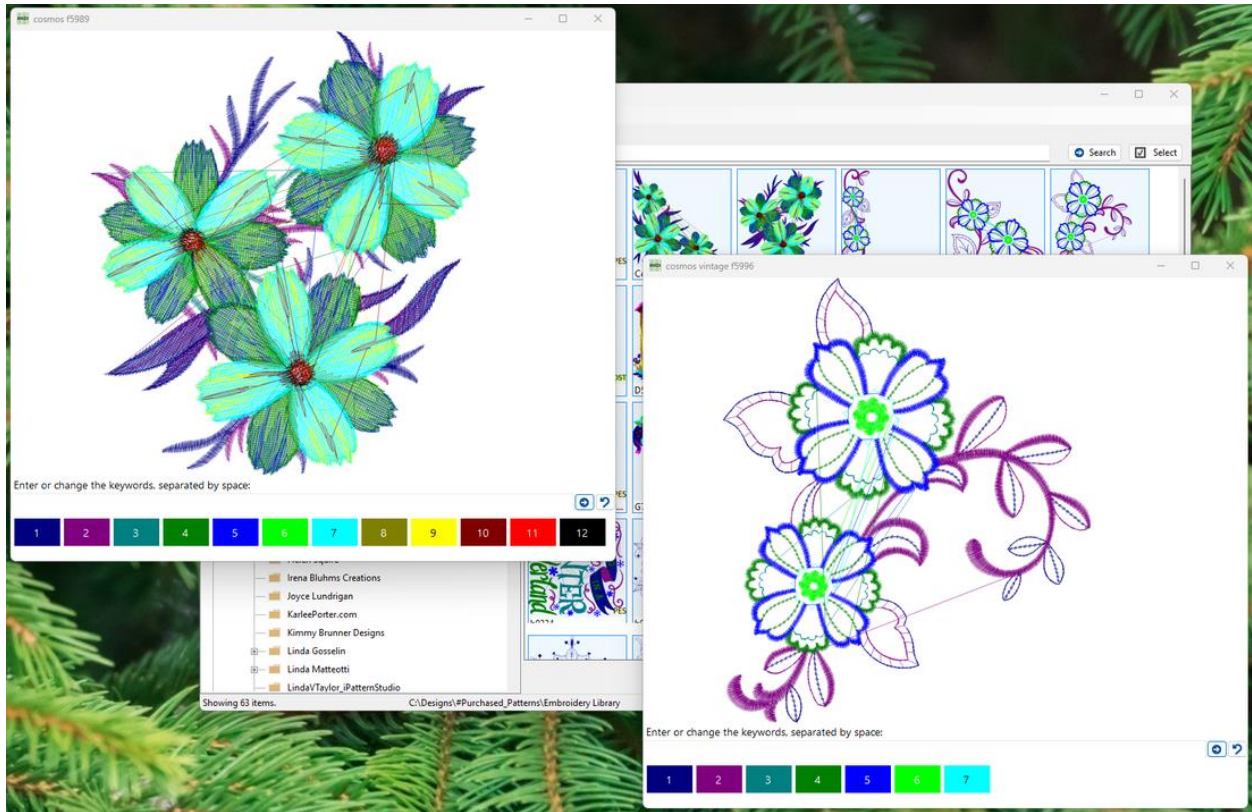


Figure 5: Example of Multiple Preview Windows

You may move and resize the windows to compare several patterns in more detail. The "Copy File to..." option can be used to efficiently copy that pattern to a USB drive and/or customer specific folder.

Keywords can be added or modified by using the input line at the bottom of the window. See section 6 for more information about assigning and managing the keywords.

If a specific pattern does not appear to render properly, please feel free to copy the file to a folder, zip/compress it, and email it to [mkdi-support@mkquilts.com](mailto:mkdi-support@mkquilts.com).

## 5 The Importance of a File Management Plan

Many longarmers and embroiderers are not experienced computer users and are just looking for a basic understanding of how to manage the patterns that they have purchased. MKDI has implemented a standard process and features to help the user unpack and manage their purchased patterns. Note: This is not the only way to manage your design files.

Handi Quilter puts the included patterns that come with Pro-Stitcher in a folder on your computer or tablet called C:\Designs. ("C:" is the device name - your internal storage in this case. "Designs" is the folder name.)



A user's files are normally stored in what they call your "home" folder. This folder is called C:\users\<>your name>. There are sub-folders called Documents, Pictures, Videos, Music, and Downloads in your home folder. And then the Windows folks proceed to confuse everyone by hiding the fact that the home folder even exists by making the File Manager display these folders under an item in the left tree window called "This PC". It is enough to confuse anyone!

In our opinion, had Pro-Stitcher been programmed as a Windows program from the start and not a controller for your machine, Pro-Stitcher would not have stored the included patterns differently. So do not feel bad about your confusion. Your phones, tablets, and Macintosh/Apple computers hide all this file system stuff from you by default. When you purchase designs, you should try to keep them in your Documents folder as this is normally backed up by various utilities.

MKDI can help you set up a "#Purchased\_Patterns" folder to help with your file management. See section 8.1.1 for details.

If you have a mess and want to start over with the default C:\Designs structure and safely keep a copy of what you have now, MKDI can help with that also. See section 8.1.6 for details.

## 6 Keywords

### 6.1 General Information

Keyword information is stored in the user's hidden data folders. In order to backup, share, or simply copy the information to another computer, you must export the information to a file. The extension on the file is ".qpi.json". (Yes, we should have changed it, but we didn't.)

Importing a "\*.qpi.json" file will add the keyword information from that file to your computer, even if the pattern is not available on that computer. If and when the pattern is installed in a folder that MKDI is configured to watch, it will apply the keywords.

### 6.2 Managing Keywords

The "Keywords" category in the left pane can be used to review all your keywords. If you select a keyword, MKDI will display all patterns tagged with that keyword.

When you open any preview window for a pattern, you will see a space-separated list of keywords (if any) for that one pattern.

You may also use the "Select" button at the top right of the main window to toggle to multi-select mode and select multiple patterns. When you have more than one pattern selected, you can right-click (or touch-and-hold), then choose "Manage Keywords". You can see what keywords are assigned to the selected patterns, and you can use the left side of the dialog window to add and remove keywords to all the selected patterns (see Figure 6).

Note: A check means that the keyword is assigned to all of the selected patterns. A black square means that the keyword is assigned to some, but not all, of the selected patterns.

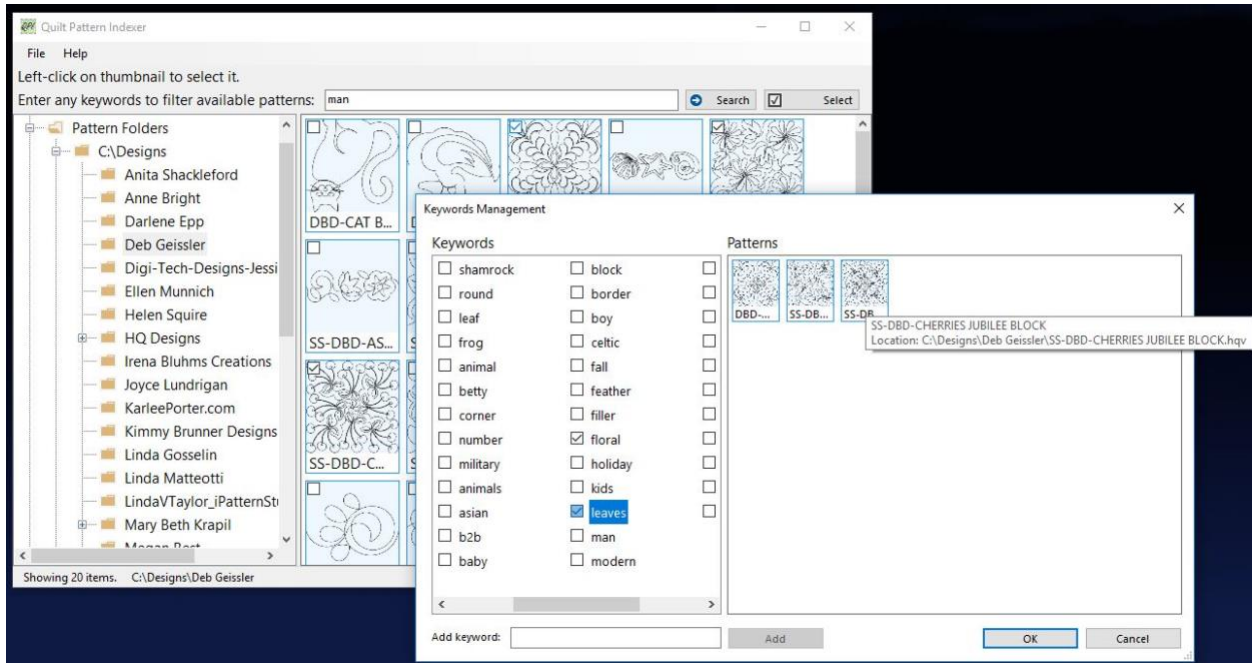


Figure 6: Keyword Management Example

Managing keywords across thousands of designs is challenging. The search function will search the file names as well as keywords, so MKDI will provide helpful functionality even without keywords.

### 6.3 Understanding a Hash Value Versus a File Name

The operation of the MKDI program may make more sense to you if you understand that MKDI is ignoring the file name and assigning the keywords and notes to the "hash value". What is a "hash value"? It is simply a large number that is created based on the contents of the file. Meaning, even if you copy and rename a pattern file, the MKDI program will look at it and see it as the same file because the content is the same. This also prevents two different patterns called "Small Block.hqf" from being mistaken for the same file.

If you add a single pattern to your Favorites, you may see more than one copy of the pattern in the thumbnail view. If you hover the cursor over them, the Tool Tips dialog box will show you that they are duplicate files saved in different directories.

## 7 Printing

MKDI allows you to print single patterns, multiple patterns, or the contents of an entire folder. Select the pattern, patterns, or folder that you want to print, then right-click (or touch-and-hold), and select "Print". You need to select "Print" in the Print dialog box (Figure 7), then you will be given a Preview Window (Figure 8). You have the options of printing full path names, keywords, and notes beneath the patterns.

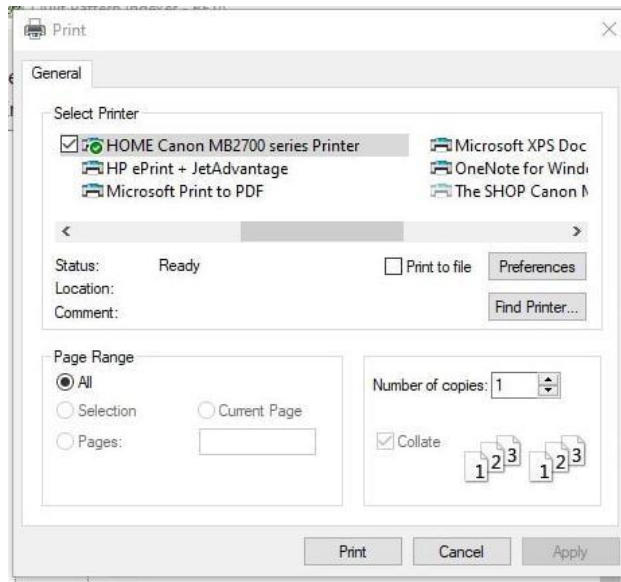


Figure 7: Print Dialog Box

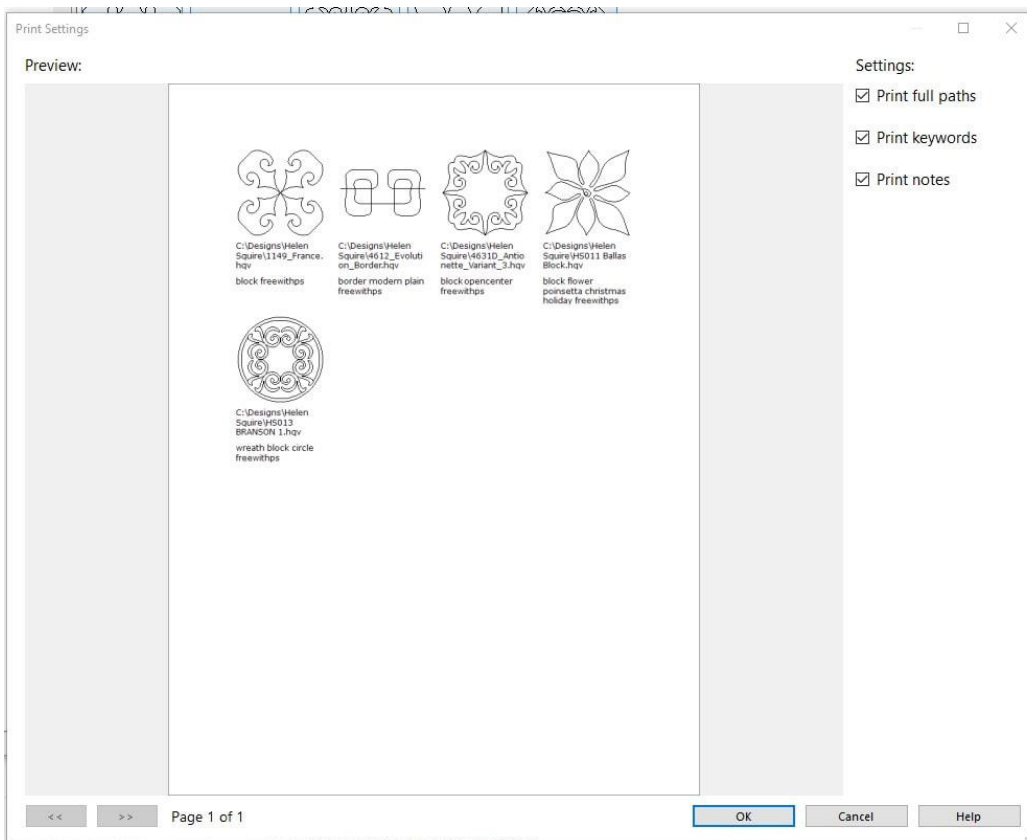


Figure 8: Print Preview Window

## 8 The Menus

### 8.1 File Menu

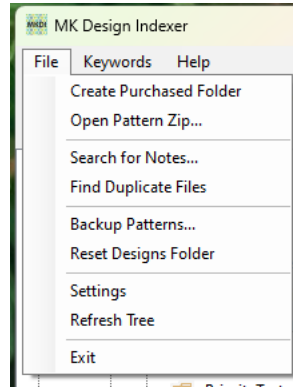


Figure 9: File Menu

#### 8.1.1 Create Purchased Folder

MKDI provides a feature to help you better manage your purchased patterns, separate from the default C:\Designs folder used by Pro-Stitcher. MKDI will create a folder called #Purchased\_Patterns in your home Documents folder. A link is then created in the C:\Designs folder so it will look like the #Purchased\_Patterns folder is there.

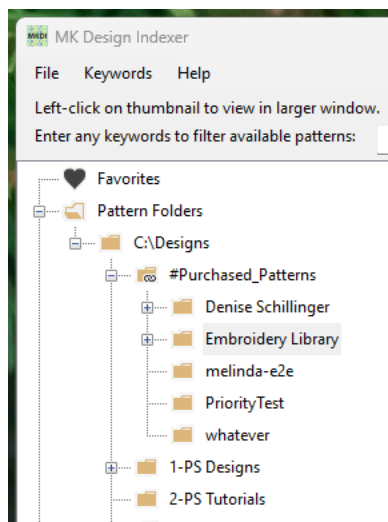


Figure 10: Purchased Patterns Folder Example

You should only need to create the purchased folder and related link once unless you accidentally delete it. (Deleting the link does not delete the target folder with the patterns in it.) If the link is accidentally deleted, you can use the "Create Purchased Folder" option to recreate it.

The "Open Pattern Zip..." process described below will utilize this #Purchased\_Patterns folder when extracting patterns from a compressed/zipped folder.



## 8.1.2 Open Pattern Zip...

MKDI provides this feature to allow a user to open a compressed (zip) folder/file and extract only a single copy of a pattern/design. Many designers provide multiple formats of the same pattern in the purchased pattern package. Based on the priority you set in Settings (see section 8.1.7), the "Open Pattern Zip..." utility will select that format and then save the patterns into the #Purchased\_Patterns folder. MKDI will extract all the patterns it finds at once, preserving any sub-folder structure.

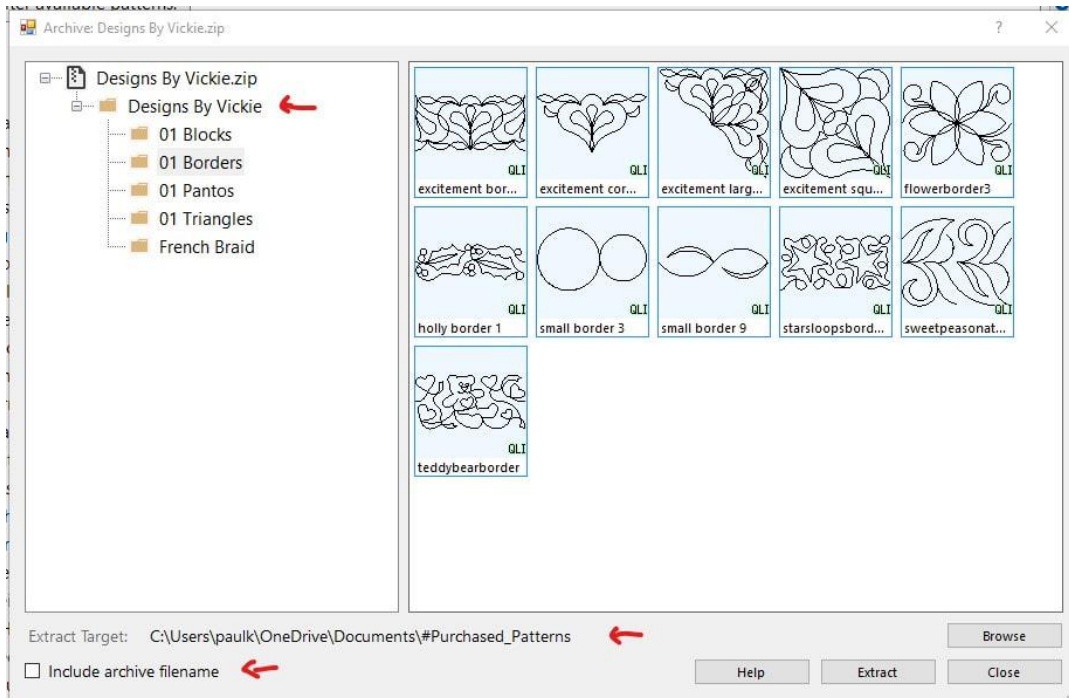


Figure 11: Open Pattern Zip Example

Most designs will have a folder already named, so you can leave the "Include archive filename" unchecked. In this example, the "Designs By Vickie" folder will be extracted into the #Purchased\_Patterns folder. Remember that this folder will also appear at the C:\Designs\#Purchased\_Patterns path due to the link put in place.

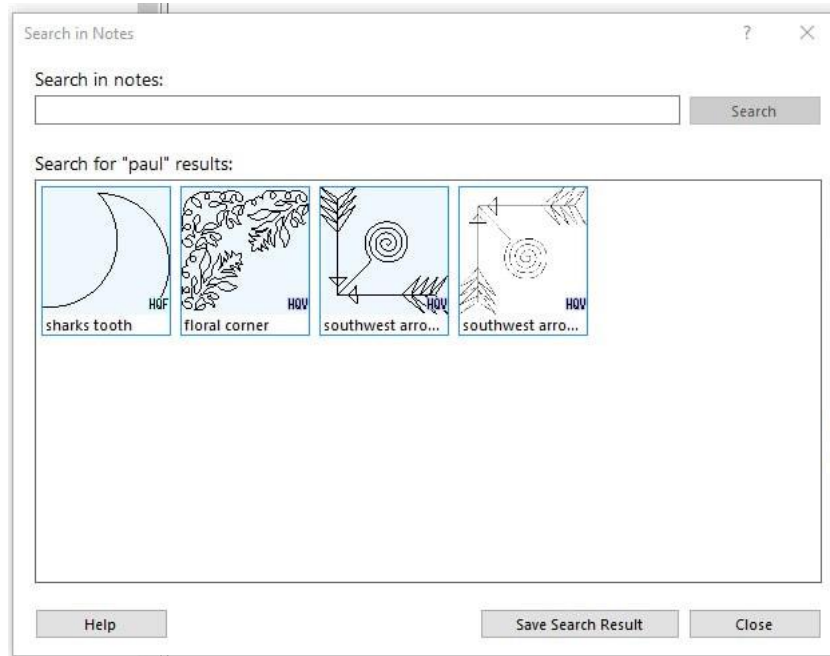
The folder structure from the compressed zip will be recreated within the #Purchased\_Patterns folder. But only one version (format) of a specific pattern name will be saved into these directories. That format will be chosen based on the order you have the pattern formats listed in the Settings dialog. This will avoid duplicates.

Select **File - Refresh Tree** if your new files do not appear. Most actions should trigger a refresh, however manually refreshing the tree is a good way to resolve issues, especially if you have been using the external File Manager to move things around.

Note that if you right-click (or touch-and-hold), you can bring up a context-dependent menu that will allow you to rename and move a folder.

### 8.1.3 Search for Notes

The "Search in Notes" item under the File menu allows you to search any text that you added to a pattern using the "Edit Notes" context-dependent menu. Figure 12 shows the results of a search for the string "paul". Four items resulted from the search. To be able to see these results after you close this search window, select the "Save Search Results" button before closing the window. The search will be added to bottom of the tree listing in the left pane of the main MKDI window.



*Figure 12: Search for Notes Example*

If you right-click (or touch-and-hold) on a pattern, either the thumbnail or in a preview window, you can choose "Edit Notes" (see Figure 13). The "Edit Notes" feature allows you a place to make notes that are not included in the default searches (see Figure 14). You can only add and modify notes on one pattern at a time. The note information is not written to the pattern file, but will be included as part of the keyword information.

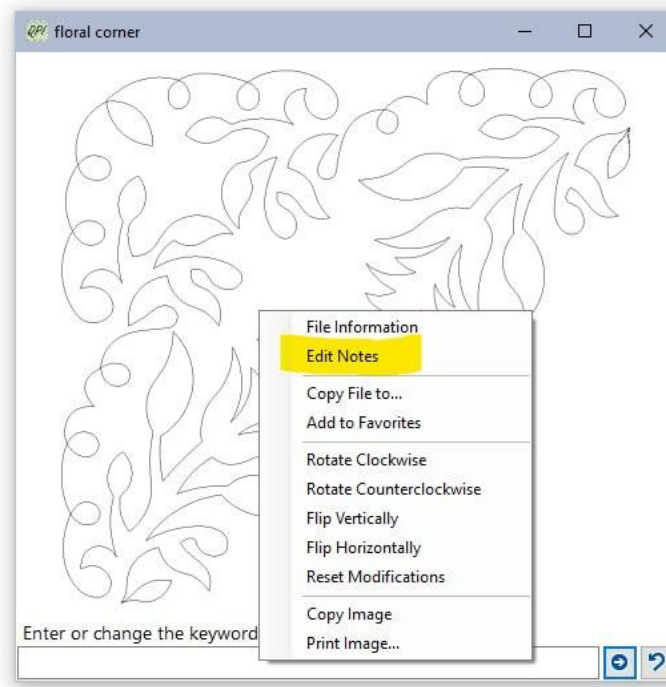


Figure 13: Contextual Menu to get to Edit Notes

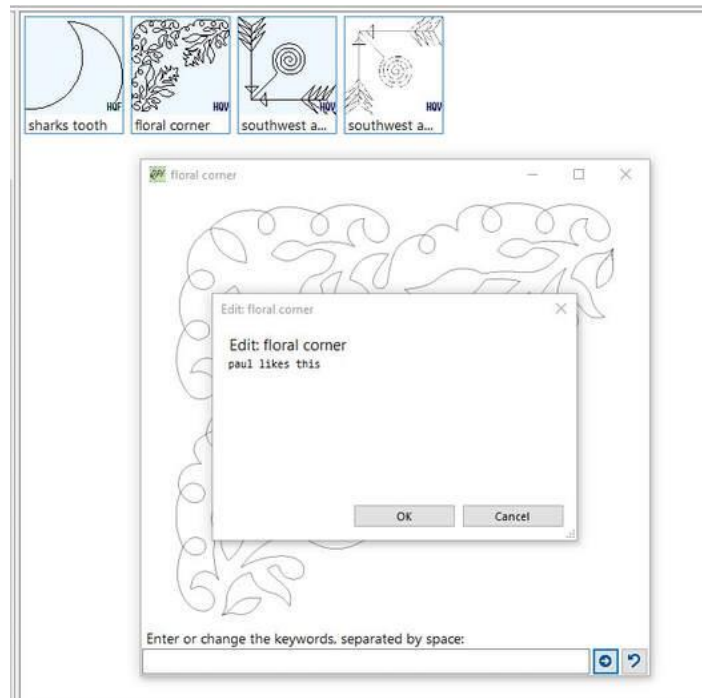


Figure 14: Edit Notes Example

### 8.1.4 Find Duplicate Files

There are many reasons to have duplicate files. MKDI can show you duplicate files based on the contents, not just the name. Even if two designs are named "corner borders" by two

different designers, they may not truly be the same file. A hash value is created from the contents of each file to make sure they are really the same.

Selecting **File - Find Duplicate Files** will open a Duplicate Patterns dialog box. Selecting any design in the left pane will show you the locations of every copy of that file (see Figure 15 for an example).

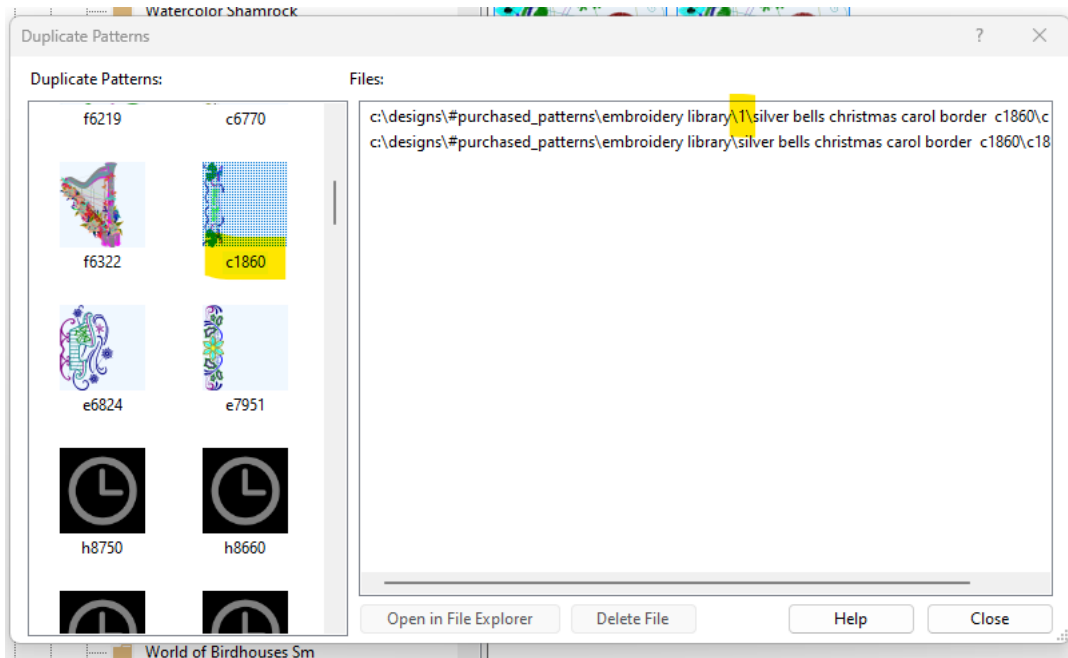


Figure 15: Duplicate Files Example

The Duplicate Patterns dialog box will show you the duplicate files and allow you to select a file. Once a file is selected, you can select "Open in File Explorer" to see and manually delete the file if desired, or you can select "Delete File" to let MKDI remove the file for you permanently. If you select "Delete File", you will be prompted for a confirmation.

The clock thumbnail you might see in the left pane is used when the real thumbnail has not yet been created. The thumbnail is typically created the first time a design is viewed in the program, so its creation does not slow things down. A future release will work in the background to resolve this issue sooner.

### 8.1.5 Backup Patterns...

Selecting **File - Backup Patterns...** will copy all patterns to a folder entitled "Patterns Backup (<date>)". You may choose where this backup folder is saved (see Figure 16). We recommend saving it to a USB drive or a network drive, to protect from a hardware failure of your computer. The current keyword information is also exported to a "keywords.qpi.json" file within the backup folder.

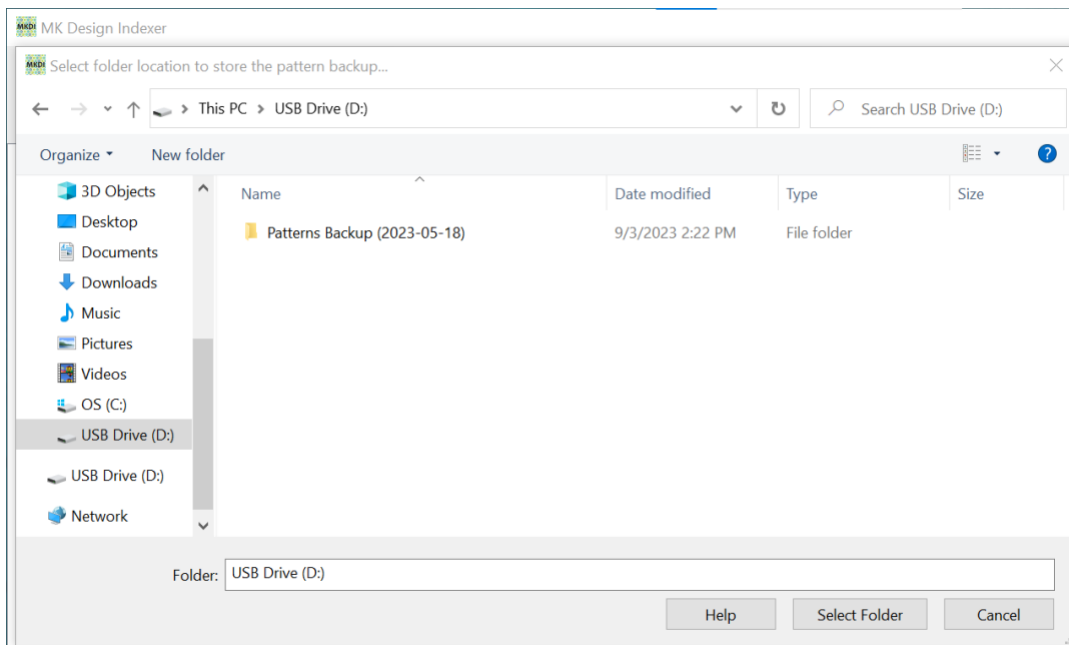


Figure 16: Backup Patterns Window Example

Restoring the backup is a manual process. The backup folder has all the pattern folders, and they can be copied to any computer using File Manager. The "keywords.qpi.json" file can be imported into MKDI to restore the keywords.

This backup feature is not intended to be used for copying the patterns for sharing or any other illegal purposes. It is recommended, however, that you keep an offline copy for recovery or migration to a new computer.

### 8.1.6 Reset Designs Folder

If you are following the #Purchased\_Patterns process described in section 8.1.1, you should not be storing anything but the default Handi Quilter patterns in C:\Designs. The "Reset Designs Folder" feature in the File menu allows you to move the existing C:\Designs folder to "C:\Designs before QPI reset", then it recreates the C:\Designs folder so that installing the Pro-Stitcher software will also install the default patterns. (We recommend using Pro-Stitcher version 516 or later, as Pro-Stitcher changed folder names and corrected issues with pattern thumbnails - sort of.) You will need to manually download the Pro-Stitcher software and install it.

After resetting your designs folder, you should then manually review the old designs folder and move any non-standard folders to the "C:\Designs\#Purchased\_Patterns" folder. You will probably need to select "Refresh Tree" (see section 8.1.88.1.7.6) when you are done.

## 8.1.7 Settings

When you select **File - Settings**, MKDI opens the window shown in Figure 17. From this window, you will be allowed to modify important parameters of the MKDI program.

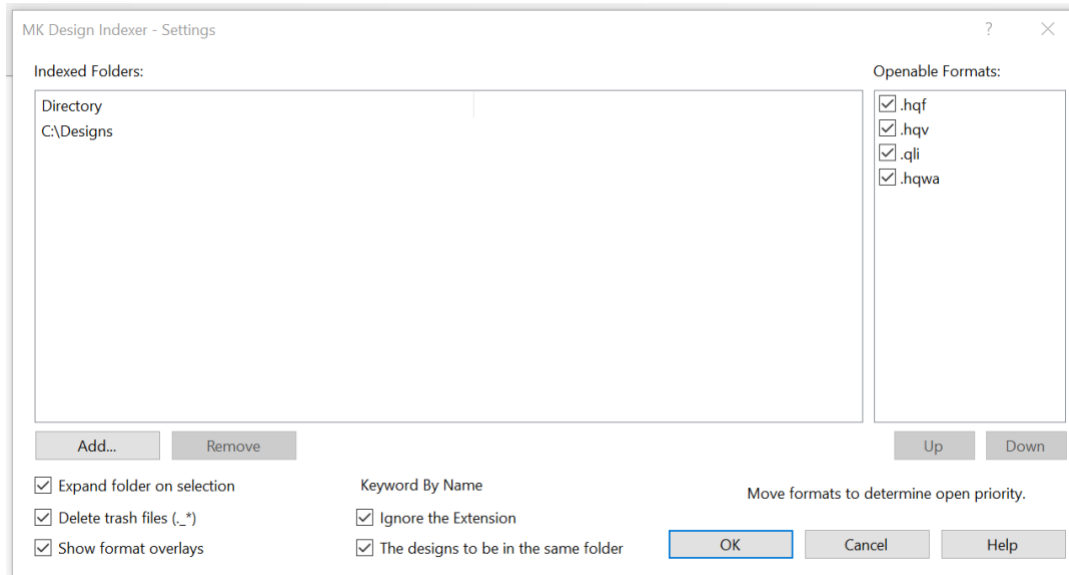


Figure 17: Settings Window

### 8.1.7.1 Indexed Folders

Indexed (searched) folders can be added or deleted from the list to control where the MKDI program looks for patterns. All sub-folders are searched, so make sure you only select the folders you need. Selecting the root "C:\\" folder will cause the searching of the entire computer every time the program is started. This will take time and is not recommended.

Any links created in these folders, including those created by Pro-Stitcher Designer, will be indexed by MKDI. You may safely remove/delete a link without deleting the target folder.

Removing a folder from this list does not remove the keyword information from the QPI program. If you add the folder back later, the keyword information will be restored as well.

### 8.1.7.2 Openable Formats

The list of formats shown will vary, depending on whether your version of MKDI is licensed for quilting, embroidery, or both.

The list of file formats can be sorted. This sorted list is used by the "Open Pattern Zip..." utility (see section 8.1.2) to save only a single version of a pattern from the compressed (zip) file. To change the order of the formats, select a format, then use the "Up" or "Down" button to change its place in the order. In the situation shown in Figure 17, the .hqf format of a pattern would be saved. If the .hqf did not exist, the .hqv would be saved, and so on. If you like to use .qli as your primary format, move that to the top.

### 8.1.7.3 Expand folder on selection

The folder tree in the left pane will automatically expand when you select it, assuming there are sub-folders. This can be disabled if you wish.

### 8.1.7.4 Delete trash Files (.\_\*)

One common problem is that users can copy system files from a Macintosh computer via a USB memory stick along with the patterns they downloaded while on their Mac. These files start with ".\_" and have a valid extension on the end. To avoid having them show up as broken patterns, MKDI can automatically delete them in the managed folders. This feature can be disabled if you want to delete the files yourself.

### 8.1.7.5 Show format overlays

The thumbnails now have a small overlay in the lower right side of the image, identifying what format the pattern is (see Figure 18). This overlay can be toggled off.

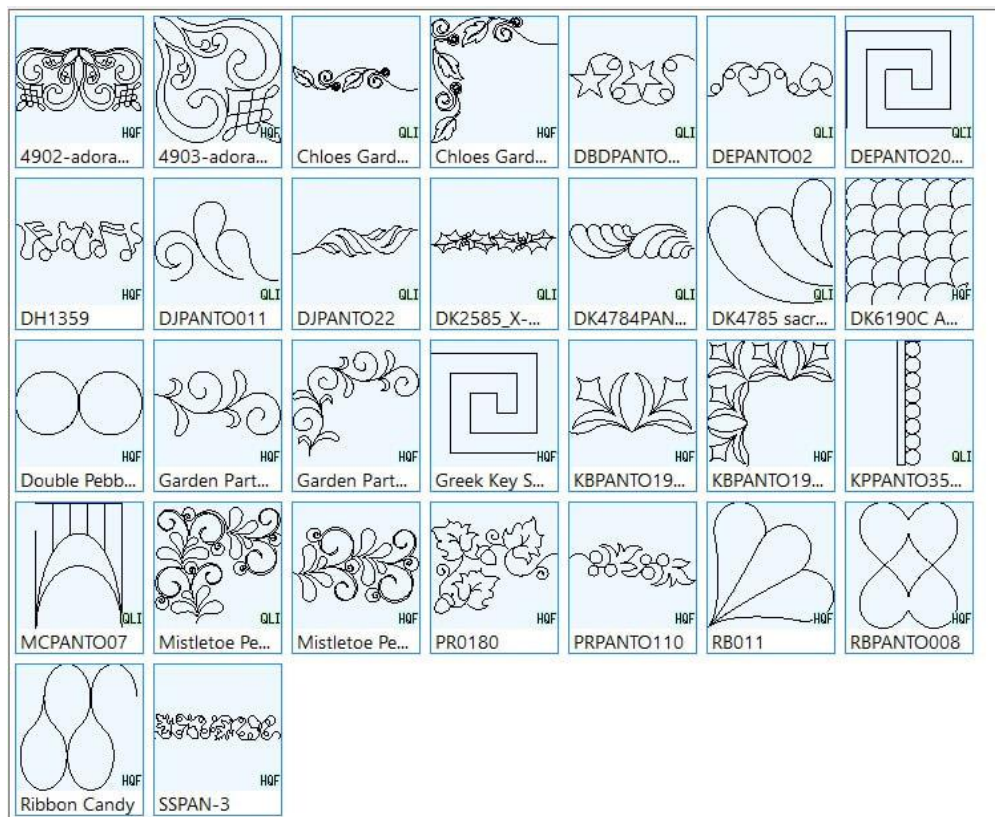


Figure 18: Format Overlays

### 8.1.7.6 Keyword By Name

This feature is not supported at this time.

## 8.1.8 Refresh Tree

MKDI monitors folders that existed when the program was started. If new folders are added while the program is running, it may be necessary to use the **File - Refresh Tree** to

get the new folders to show up in the program. Restarting the program will also automatically refresh the tree.

### 8.1.9 Exit

Selecting **File - Exit** will cause the MKDI program to quit. Another way to exit the program is to select the "X" in the upper right corner of the window.

## 8.2 Keywords Menu

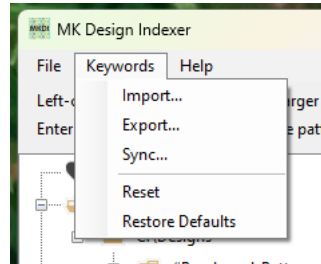


Figure 19: Keywords Menu

Many keyword-related options are now in their own "Keywords" menu. Many of the features for keywording are accessed through the context-dependent (right-click) menus that appear for files and folders. See section 6.2 for more information on the mechanics of keywording.

MKDI includes a set of default keywords provided by MK. Applying additional keyword files will not delete previous keywords. It will add keywords only.

Keyword information is stored in the user's hidden data folders. In order to backup, share, or simply copy the information to another computer, you must export the information to a file. The extension on the file will be ".qpi.json". (Yes, we should have changed it, but we didn't.)

Importing a "\*.qpi.json" file will add the keyword information to a computer, even if the pattern is not available on that computer. If and when the pattern is installed in a folder that the MKDI program is configured to watch, it will apply the keywords.

No patterns are copied or moved by the Import or Export options.

### 8.2.1 Import...

Selecting **Keywords - Import...** allows you to import a keywords file from an external source. Just navigate to the location of the file, select the keywords file, then select "Open".

### 8.2.2 Export...

To create a copy of your keywords file, select **Keywords - Export...**, navigate to the location where you want to save the new file, enter the desired file name, then select "Save". This file can be shared, copied to another computer, or simply kept as a backup of your keywords.



## 8.2.3 Sync...

The Sync feature is a quick method for exporting the keywords in such a way that you can synchronize the keywords on two different devices. The Sync feature requires that a USB memory stick be attached.

This feature is a quick way to keep the keywords on your machine tablet in sync with those on your personal computer where you are running Pro-Stitcher Simulation. If your embroidery machine is running Windows, you may be able to also run MKDI on your embroidery machine.

To use the Sync feature, select **Keywords - Sync...**, then select the USB drive in the left part of the window. The window will show you if there is a sync and/or a backup file with keyword information, as well as their dates. If you don't see your USB drive, or if you insert a different USB drive, select "Refresh List" to update the window.

Note that no designs are copied by any of the Sync actions. Only the keyword and hash information are copied. The target MKDI system does not need to have the actual design files. The new information will be copied, but it will not be used if the referenced design file is not present. If the design file is added later, MKDI will already have the keyword information available.

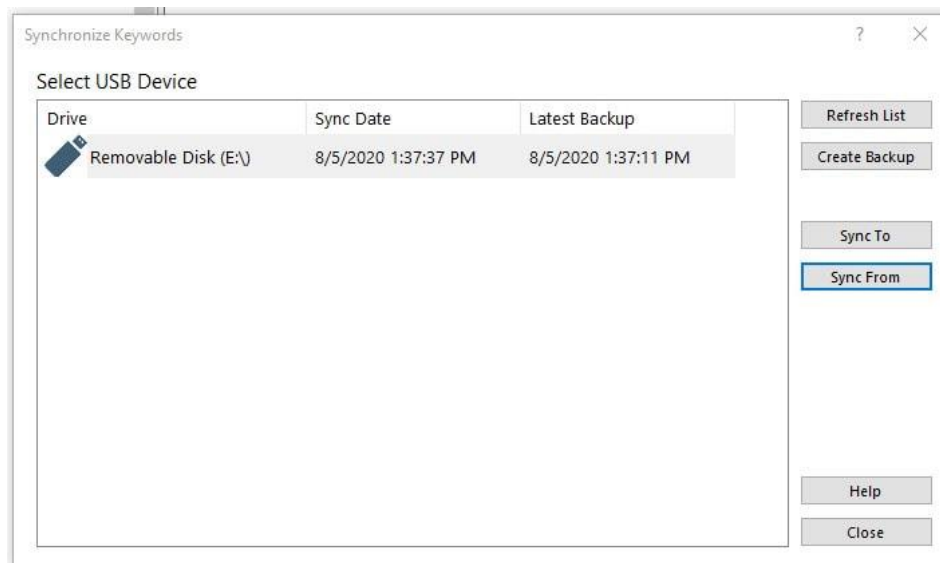


Figure 20: Synchronize Keywords Window

### 8.2.3.1 Create Backup

"Create Backup" will write a copy of the keyword file, as it exists at that point in time. The file name of the backup file contains the date of the backup, so only one backup file can be saved per day.

### 8.2.3.2 Sync To

"Sync To" will cause any new hash or keyword information from your active MKDI index to be copied **to** the USB sync file.



### 8.2.3.3 Sync From

"Sync From" will cause any new hash or keyword information from to be copied **from** the USB sync file to your active MKDI index.

### 8.2.4 Reset

Select **Keywords - Reset** to delete all your keywords. Use this function with caution unless you have recently made a backup of your keywords.

### 8.2.5 Restore Defaults

Select **Keywords - Restore Defaults** to restore the MK keywords.

## 8.3 Help Menu

### 8.3.1 MKDI Facebook Group

Selecting **Help - MKDI Facebook Group** will open your browser and take you to the MKDI group in Facebook.

### 8.3.2 Support Website

Selecting **Help - Support Website** will open your browser and take you to the Support/Manual page of the MKDI website.

### 8.3.3 MK Quilts University

Selecting **Help - MK Quilts University** will open your browser and take you to the MK Quilts University website.

### 8.3.4 What's new

Selecting **Help - What's new** will open your browser and take you to the "What's New" part of the Support/Manual page of the MKDI website.

### 8.3.5 About

Selecting **Help - About** will show you a window with the MKDI version number, as well as your licensing status.

## 9 FAQ - Frequently Asked Questions

### 9.1 Synonyms

These words are often used interchangeably:

- Folder - Directory
- Pattern - Design
- Melissa - MK

### 9.2 I can't see any designs in the QPI window

By default, MKDI looks for designs in C:\Designs. It will also look for a "Designs" folder in your "Documents" folder (C:\users\\Documents\Designs) if it exists. By



default, Pro-Stitcher loads free designs into the C:\Designs folder on the Pro-Stitcher tablet at the machine, but these designs need to be copied to the computer running the simulator software.

You can add and delete folders to be searched by the MKDI program by selecting **File - Settings** through the main menu. (See section 8.1.7.1 for more information.)

### 9.3 What is the best place to save my patterns?

For the computer novice, we have integrated a standard practice into MKDI that will create a "link folder" under C:\Designs called "#Purchased\_Patterns". The "#" symbol will make it appear at the top of a listing for easy access. MKDI will also create an actual folder in your Documents folder of the same name. All patterns stored here will appear that they are under the C:\Designs folder, but they actually are stored properly under your Documents folder.

Wherever you store your patterns, be sure that they are securely backed up somewhere other than your computer or Pro-Stitcher tablet.

### 9.4 My C:\Designs folder is a mess! What can I do?

MKDI provides a feature to move your existing C:\Designs folder aside and walks you through installing the latest fresh copy of the patterns that come with Pro-Stitcher. You will then need to manually go through the original folder and move any patterns you want to retain into your #Purchased\_Patterns folder. See section 8.1.6 for more information.

### 9.5 Can I install MKDI on multiple computers?

Yes, one user may activate multiple copies of MKDI on different computers. Simply download another copy of the Activator using the download link in the email sent to you when you purchased it. If you need assistance in setting it up, however, there may be a service charge.

### 9.6 Some of my designs are not showing up

The program supports the file formats shown in "Settings" (see section 8.1.7). The list of available file formats will be different depending on whether your version of MKDI is licensed for quilting, embroidery, or both. Make sure that the designs you are attempting to view are in one of the supported file formats.

It is possible that you have not yet uncompressed/unzipped the files that you purchased. Be sure to uncompress/upzip the files into a folder that is being indexed by MKDI (see section 8.1.7.1). Select **File - Refresh Tree** or restart the program to ensure that the new files are found.

### 9.7 How do I update to the latest version?

Simply download the MKDI software from the Download page ([www.mkdesignindexer.com/download.html](http://www.mkdesignindexer.com/download.html)) and install it as you installed the software the first time. The new software will simply overwrite the previous version. Your settings and keywords are stored separately and will not be changed.



## 9.8 What is a "dot release"?

When you purchase the QPI program, you will be entitled to use the program as long as you have a machine that will run the program. For the sake of this discussion, we are talking Windows 7 and Windows 10 systems.

You are also entitled to any "dot releases". These are usually bug fixes and minor enhancements needed to keep the program running well. The "dot" signifies the decimal in the program version number. If you buy version 1.0... you are entitled to version 1.0, 1.05, 1.1, 1.2, 1.3, 1.35, etc.

Our goal for software tools is to keep them simple and focused on our customer. Features that add complexity and address other audiences will likely be kept as a separate product. This will keep the cost of the tools reasonable so you have more money for quilting.

## 10 Troubleshooting Steps

If you are having problems with MKDI, here are some things that you can step through to get it working.

1. Install the software. For version 1.5 and earlier, the activation program only installs the license, but you must also install the software.
2. After 14 days, the software will not go past the title box. Purchase a license from [shop.mkquilts.com/search.php?search\\_query=mkdi](http://shop.mkquilts.com/search.php?search_query=mkdi)
3. Make sure you have your patterns installed on your computer. If you do not have them under the C:\Designs folder or the "Designs" folder in your "Documents" folder (C:\users\\Documents\Designs), you need to add the top-level path to the list of Indexed Folders (see section 8.1.7.1) so that it will look for your patterns there.
4. **Read this manual**, which is available via the Help menu or directly at [www.mkdesignindexer.com/support.html](http://www.mkdesignindexer.com/support.html)
5. Book a time for us to get on your computer with you to fix any issues. It will normally take us less than 15 minutes to do so, and you will not be charged because you are an MKDI owner. Go to: [www.mkquilts.com/support.html](http://www.mkquilts.com/support.html)

## 11 Release Notes

### 11.1 MKDI Version 2.09

- Addressed a lot of confusion with the window that pops up when a trial license is active. We still don't have an OK button, so just hit the 'X' to close the window. QPI = Quilting license is still active even if the trial Embroidery license period is running. The Activate Now button was not available during a trial.
- Added a Keyword by Name feature... still in testing. This may help when Handi Quilter changes their default patterns between versions. It should allow you to bring over the keywords from the previous version if named the same.



- Thumbnails are regenerated automatically as needed.
- Online manual updates will take a week or so to update.
- The color blocks on the preview window no longer shows for single color patterns like quilting patterns. Saving screen space.
- Known issue: Help buttons throughout the program, as well as the "Support Website" and "What's new" options from the Help menu, all point to the old quiltpatternindexer.com website.

## 11.2 MKDI Version 2.05

- MK Quilts-Clone Keywords feature removed. (did not work)
- Changed the term "Purchase" to "Purchased".
- Removed the next line that states "No Licenses detected. Running in trial mode only".
- Activate Now dialog defaults to the user's Downloads folder.

## 11.3 MKDI Version 2.04

- Scaling issues corrected.
- New feature: Adjust number of thumbnails displayed.
- Increased thumbnail image size/detail - Need to refresh folder manually for now.

New features:

- Embroidery Design Support
- Many bug fixes
- Renaming of the program
- Simplified licensing mechanism - pre-licensed downloads
- Faster processing
- Control the number of thumbnails displayed in a row
- Color count listing in preview
- Scaling improvements

## 11.4 QPI Version 1.5 (August 2020)

Free update to current owners of Quilt Pattern Indexer - QPI.

New Features:

- SEARCH for patterns WITHOUT KEYWORDS by using two double quotes - "" - as the search input. Like other search functions, it will search from the selected folder through sub-folders. You can right-click on the search tree item to 'manage keywords' and to 'refresh search' as you apply keywords.
- Established process for managing purchased patterns. CREATE PURCHASED FOLDER menu item creates a folder - #Purchased\_Patterns - in your personal



Documents folder AND it creates a link in the C:\Designs folder so that it appears in that folder too.

- OPEN PATTERN ZIP menu item that will provide a custom interface for extracting purchased patterns into your "#Purchased\_Patterns" folder. It will extract only one copy of the pattern based on the priority you provide for QLI/HQV/HQF formats, reducing the likelihood of duplicates.
- EXPAND FOLDER ON SELECTION settings option. (On by default.) This will cause the left tree to expand when selecting a folder that has sub-folders. You no longer have to click the "+" symbol to expand the tree.
- FIND DUPLICATE PATTERNS - Displays a thumbnail of pattern in left tree. DELETE FILE button available to delete selected file from list. A warning dialog asks for confirmation.

CAUTION: The ability to DELETE has been added to QPI 1.5. Previously we limited file management functions that could lead to the loss of a pattern. A warning prompt is given to confirm any deletion.

- THUMBNAIL MODIFICATION FEATURES - "Regenerate Thumbnails" has been added to the folder context dependent menu. This will resolve most thumbnail issues.

Due to some of the embedded thumbnail images in patterns that are not rotated appropriately, we now allow you to rotate and flip the thumbnails - without actually modifying the patterns. Right-click on the thumbnail(s) will allow you to "Flip Thumbnail Vertically" which will generally correct the issue. (Select all in a folder and do them at once.) If you are in preview mode, a right-click will allow you to rotate and flip the image. Upon closing the preview, you will be prompted whether you want to save that change to the thumbnail.

- PRINT SETTINGS dialog appears after hitting the print button to allow you to see a small preview and select options: Print full paths, Print Keywords, Print Notes.
- MOVE TO... context menu item added to allow you to move a pattern or folder - BUT ONLY WITHIN THE MANAGED TREE. IF you want to move it to a folder or USB location, use the COPY TO... context menu item. This is done to avoid confusion due to the patterns disappearing from QPI if you move them to a folder outside of the QPI Indexing path (configured in the settings dialog.)
- OPEN IN EXPLORER context menu item added to automatically open the File Explorer to that file/folder. If you rename through the File Explorer, you need to select FILE->REFRESH TREE for QPI to see the change.
- KEYWORDS management broken out to its own menu tree. Import and Export Keywords options have not changed. The new SYNC option will either export or import keywords from a USB. This is to simplify keeping two devices in sync.

Backup vs. Sync: Sync just deals with the keywords. You can use the Backup Patterns option to go to USB and then manually restore those pattern files to



another device if you need to make sure the patterns are the same on both devices. The keyword file is also exported and can be manually imported on the new device.

- **DEFAULT KEYWORDS** - If you restore the default keywords in version 1.5, it will use MK's keyword file. In most cases, new users would want to start with a set of keywords already established for the common included files. MK's keywords include a lot of purchased patterns that many will not have, but may come across later.
- **SYNC KEYWORDS** - A new way to keep two device's keywords in sync.
- **RESET DESIGNS FOLDER** - A utility to help start with the default patterns without losing anything.

#### Fixes / Enhancements:

- **LONG PATH ERROR HANDLING** - Many Windows features do not deal with files that are located in a folder path that exceeds 260 characters. QPI will no longer display an error message and will index and display these files. However, some features will not work until you manually shorten the path.

**BAD EXAMPLE:** C:\DESIGNS\#Purchased\_Patterns\My favorite designer\really nice borders\curley and fluffy borders\bought in February\on the 23rd\while wearing short pants\saved as format QPI\My favorite designer\really nice borders\curley and fluffy borders\bought in February\on the 23rd\while wearing short pants\saved as format QPI\border1.qli

**GOOD EXAMPLE:** C:\DESIGNS\#Purchased\_Patterns\Mdesigner\boarders\curley-fluffy\February\23rd\QPI\border1.qli

- Config files in the user's hidden APPDATA folder are automatically backed up and if there is a corruption, restored to the previous version. - File corruption was a very rare occurrence, but it is best to be safe.
- Auto-deletion of ".\*" files in the managed folders. These files are brought over from the MAC file system and are not needed. They would show up as broken/corrupt patterns in QPI.
- Red X icons change to a broken file icon. Viewing these files in File Explorer - use the new context menu option - often will show that they are not valid pattern files. You can choose to just delete these files from the context menu.

Example: The "C:\Designs\1-PS Designs\Corners\Flower Pots Corners.hqv" being distributed with the PSP Beta is a zero byte file. No pattern information.